



**DESCRIPTION**

The network scanner is the main equipment of V-Link-I system, which is the bridge of communication management software and electronic patch panel, and reports the information of patch panel port to the server through Ethernet or CAN bus. The connection between the network scanner and the patch panel is connected by D-type interface connection cable.

**FEATURES**

- Provide 6, 12, 24 slot specifications are available
- Standard 19" cabinet installation, Height 1.5 RU
- Interface: one 10/100 M Ethernet interface, a set of standard CAN bus interface
- Special scanner cable connects to the intelligent patch panel. The scanner centralized-control all the downstream connection of electronic patch panel
- Executive work order sent by user
- The scanner regularly sends detection signal to the monitoring port, and returns the results to the management software. If the feedback result is found not matching with the information stored in the memory, the port light alarm immediately, and a notification will be sent to the server management software to do the corresponding processing
- The screen display on the scanner will real-time display the local port connection situation, task, work order, alarm information
- Data will be automatic recovered, Power restarted

**ELECTRICAL PERFORMANCE**

|                    | Small-scale Scanner with 6 Slots | Medium-scale Scanner with 12 Slots | Large-scale Scanner with 24 Slots |
|--------------------|----------------------------------|------------------------------------|-----------------------------------|
| <b>Power Input</b> | AC 110V/220V, 50/60Hz            |                                    |                                   |
| <b>Rated Power</b> | 30W                              | 36W                                | 48W                               |
| <b>Capacity</b>    | Max 144 ports                    | Max 288 ports                      | Max 576 ports                     |

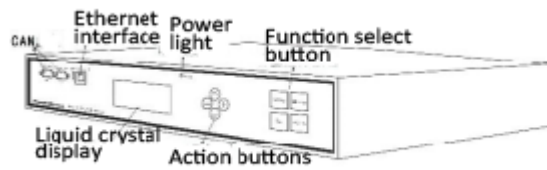
**PHYSICAL PERFORMANCE**

|                              |              |
|------------------------------|--------------|
| <b>Operation Temperature</b> | 0° C ~ 60° C |
| <b>Humidity</b>              | 5% ~ 90%     |



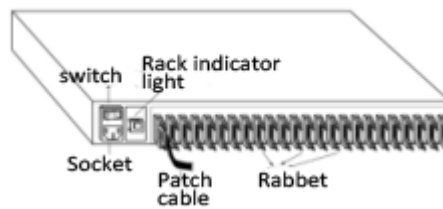
**FRONT BOARD**

- 10/100M Ethernet: 1 pc
- CAN Bus: 1 Pair



**BACK BOARD**

- Control Interface: 6-24 Slots
- Rack Indicator: 1 pcs

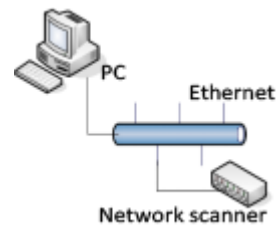


**COMMUNICATION MODE**

Two modes: Master and Slave

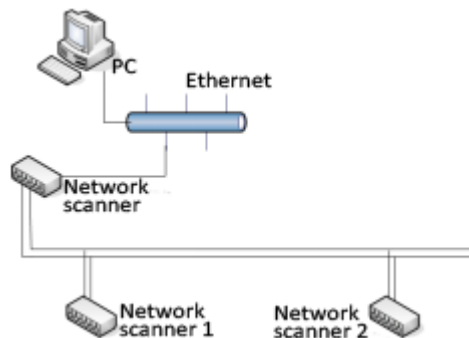
▪ **Master Mode:**

- 10/100M Ethernet, IEEE802.3/IEEE802.3u
- 10Base-T/100Base-TX, ANSI X3T12TP-PMD1995 Standards
- CAN Bus, ISO11898024V Standard
- Rate:5K~1M/S
- Maximum capacity: 110 pcs slaves
- Longest transmission distance: 10KM (from first machine to last one)



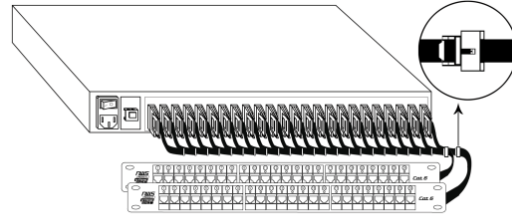
▪ **Slave Mode:**

- CAN Bus, ISO11898024V Standard
- Rate:5K~1M/S
- Maximum capacity: 110 pcs slaves
- Longest transmission distance: 10KM (from first machine to last one)



CONNECTION TO E-PANEL

- Connection cord with both end of 2X7 pin connector



ORDERING INFORMATION

| Part No.          | Description  |
|-------------------|--|
| VCLPIPP-SCNR-06CP | VIVANCO Small-scale Scanner, with 6 slots to monitor up to 6 pcs e-Panel, 19" Rack Mount,1.5U    |
| VCLPIPP-SCNR-12CP | VIVANCO Medium-scale Scanner, with 12 slots to monitor up to 12 pcs e-Panel, 19" Rack Mount,1.5U |
| VCLPIPP-SCNR-24CP | VIVANCO Large-scale Scanner, with 24 slots to monitor up to 24 pcs e-Panel, 19" Rack Mount,1.5U  |