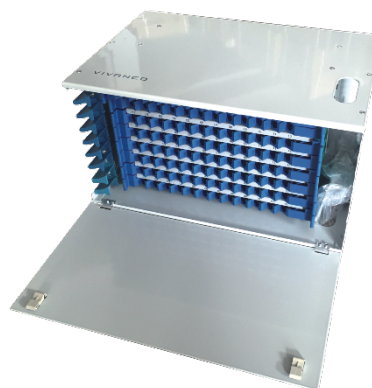




DESCRIPTION

- Plastic structure, legerity appearance
- Easy for installation of inlay
- Convenient to expand capacity
- Obliquity of adaptors is 30°, which ensure the bend radius of Patch cord and avoid laser burning eyes
- Kinds of splicing and distribution mark. Easy to make fusion and distribution record



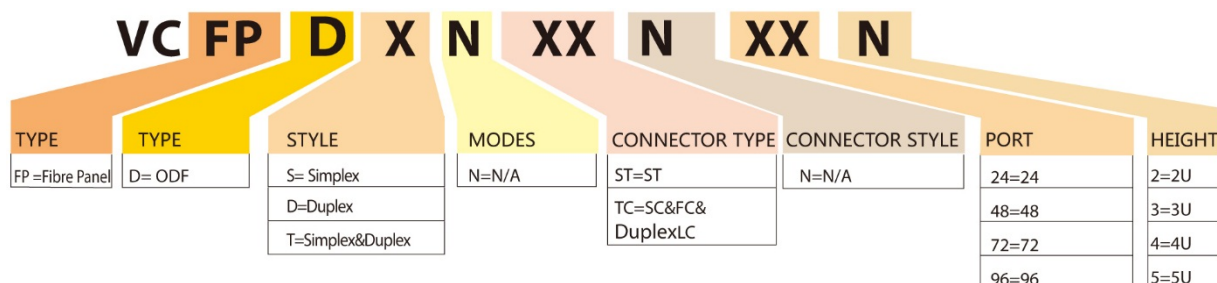
SPECIFICATION

- Material: ABS
- Weight: 0.5kg
- Dimension: 340×200×25(mm)

PACKING INFORMATION

Type	Net Size(mm)	Inner Carton Dimension(mm)	Inner Carton Weight(kg)
02U6-C12	480×250×1U	465×285×75	3.1
02U6-A48	480×210×3U	450×255×145	6
02U6-A72	480×210×4U	455×255×195	7.7
02U6-B24	480×300×2U	475×335×130	5.7
02U6-B48	480×300×3U	470×335×170	7.7
02U6-B72	480×300×4U	470×335×220	9.8
02U6-B96	480×300×6U	470×335×290	13.7

NAME CODING



ORDERING INFORMATION AND COMPLIANCE

Part No.	Description	Compliance
VCFPDSNSTN242	24 Port ODF (For 24 core ST, adaptor unloaded, 2U)	ISO/IEC11801 ANSI/TIA/EIA 568-C. 3
VCFPDTNTCN242	24 Port ODF(For 24 core SC/FC, 48 core Duplex LC, adaptor unloaded, 2U)	
VCFPDSNSTN483	48 Port ODF (For 48 core ST, adaptor unloaded, 3U)	
VCFPDTNTCN483	48 Port ODF (For 48 core SC/FC, 96 core Duplex LC, adaptor unloaded, 3U)	
VCFPDSNSTN724	72 Port ODF (For 72 core ST, adaptor unloaded, 4U)	
VCFPDTNTCN724	72 Port ODF (For 24 core SC/FC, 144 core Duplex LC, adaptor unloaded, 4U)	
VCFPDSNSTN965	96 Port ODF (For 96 core ST, adaptor unloaded, 5U)	
VCFPDTNTCN965	96 Port ODF (For 96 core SC/FC, 48 core Duplex LC, adaptor unloaded, 5U)	