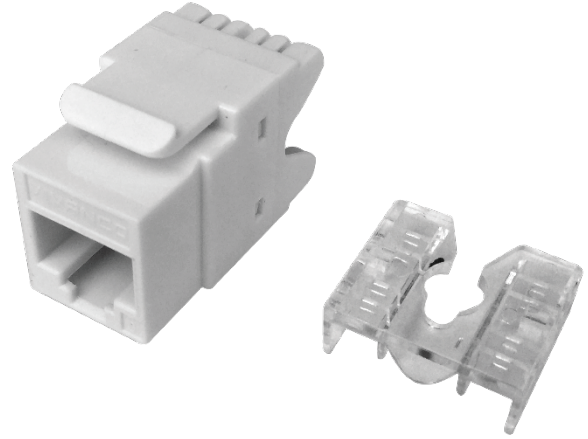


COMPLIANCE

- ANSI/TIA 568-C.2 Category 6
- ISO/IEC 11801 Class E

FEATURES & BENEFITS

- Best impedance matching
- Wiring port 45° crossover design
- Connecting points adopt the special to effectively reduce NEXT
- Compatible with all Vivanco face plate and unshielded patch panel



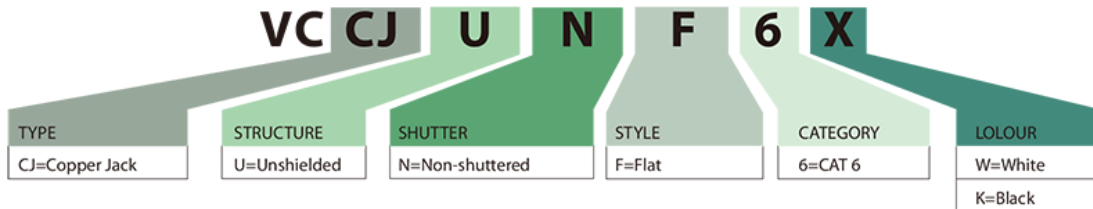
PHYSICAL CHARACTERISTICS

IDC	Phosphor bronze
RJ45 Pin	Phosphor bronze with 50micrinch gold plating
Plug Insertion	≥1000 times
IDC Insertion Life Span	≥250 times
AWG	22~26AWG
Wiring	T568A/T568B

ELECTRICAL CHARACTERISTICS

Dielectric Strength	DC 1000V(AC750V) 1min,no breakdown and arcing phenomena
DC Resistance (Ω)	≤300mΩ
Connecting Resistance (Ω)	≤20mΩ
Insulation Resistance (Ω)	Under normal atmospheric pressure ≥500mΩ

NAME CODING



ORDERING INFORMATION

Part NO.	Description
VCCJUNF6W	VIVANCO CAT 6 Unshielded RJ45 Keystone Jack(White)
VCCJUNF6K	VIVANCO CAT 6 Unshielded RJ45 Keystone Jack(Black)