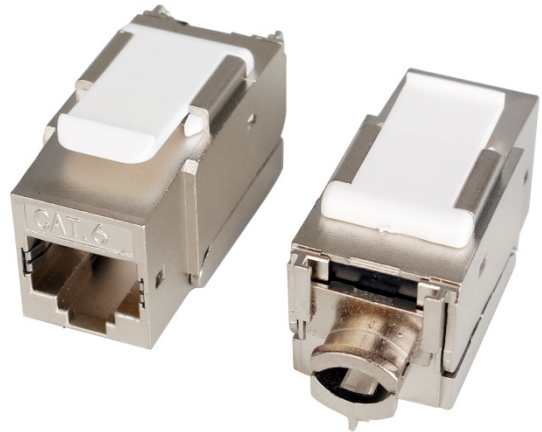


COMPLIANCE

- ANSI/TIA 568-C.2 Category 6
- ISO/IEC 11801 Class E

FEATURES & BENEFITS

- 360° fully shielded design to effectively prevents EMI
- Best impedance matching
- Gold plated to prevent surface oxidation and improve the performance of the contact so as to ensure the performance and service life



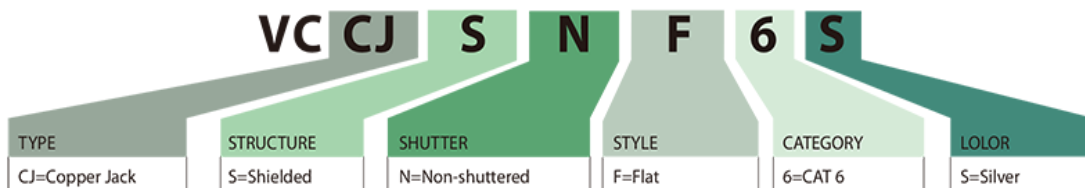
PHYSICAL CHARACTERISTICS

IDC	Phosphor bronze
RJ45 Pin	Phosphor bronze with 50microinch gold plating
Plug Insertion	≥1000 times
IDC Insertion Life Span	≥250 times
AWG	22~26AWG
Wiring	T568B

ELECTRICAL CHARACTERISTICS

Dielectric Strength	DC 1000V(AC750V) 1min, no breakdown and arcing phenomena
DC Resistance (Ω)	≤300mΩ
Connecting Resistance (Ω)	≤20mΩ
Insulation Resistance (Ω)	Under normal atmospheric pressure ≥500mΩ

NAME CODING



ORDERING INFORMATION

Part NO.	Description
VCCJSNF6S	CAT 6 Shielded RJ45 Keystone Jack