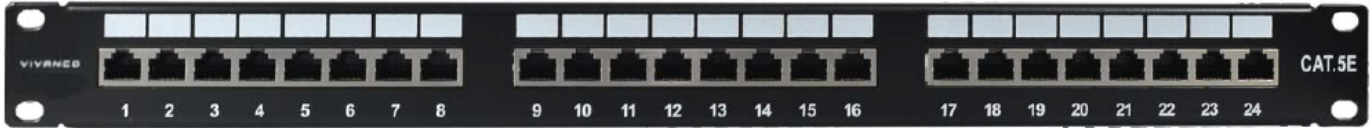


FEATURES & BENEFITS

- Offer RJ45 port and support CAT 6 and CAT5e patch cord
- Each jack can be individually disassembled
- Each jack with a cover to prevent the dust
- Offer 25 port (1U) and 50 port (2U) type
- Standard 19", widely used as industry standard

COMPLIANCE

- ANSI/TIA 568-C.2 Category 5e
- ISO/IEC 11801 Class D



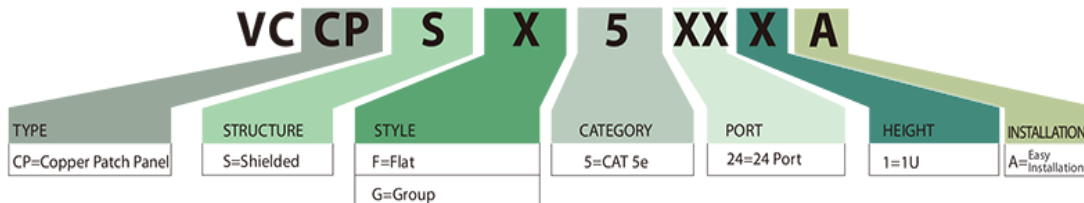
PHYSICAL CHARACTERISTICS

IDC	Phosphor bronze
RJ45 Pin	Phosphor bronze with 50micrcoinch gold plating
Plug Insertion	≥1000 times
IDC Insertion Life Span	≥250 times
AWG	22~26AWG
Wiring	T568A/T568B

ELECTRICAL CHARACTERISTICS

Dielectric Strength	DC 1000V(AC750V) 1min,no breakdown and arcing phenomena
DC Resistance (Ω)	≤300mΩ
Connecting Resistance (Ω)	≤20mΩ
Insulation Resistance (Ω)	Under normal atmospheric pressure ≥500mΩ

NAME CODING



ORDERING INFORMATION

Part NO.	Description
VCCPSF5241	CAT 5e Shielded 24 Port Patch Panel
VCCPSF5241A	CAT 5e Shielded 24 Port Patch Panel (easy installation)
VCCPSG5241	CAT 5e Shielded 24 Port Patch Panel (8 port as one unit)
VCCPSG5241A	CAT 5e Shielded 24 Port Patch Panel (8 port as one unit, easy installation)

Quick connect patch panel is optional and quick deployment (suitable for column square hole 9.5 * 9.5mm, hole center distance 31.75 mm)